

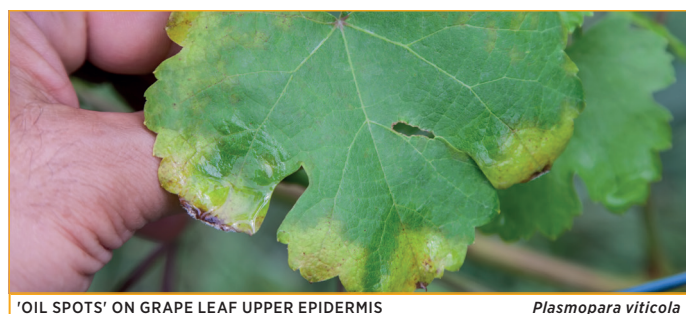


BASIC INFORMATION

TARGET	Downy mildew (<i>Plasmopara viticola</i>)
CROP	Wine grape, cv. Moscato (<i>Vitis vinifera</i>)
SPRAY VOLUME	1000 l/ha
LOCATION	Alba, Piedmont • Italy
TRIAL DATE	May – October 2005
RESEARCHER(S)	T. Hoppe, BioEco

FIELD SITUATION

The experimental plot size was 30 m² and a randomized complete block design was used with 4 replications. There were 4 treatments including King NEW (copper), King (tribasic copper sulphate) and **PREV-AM**. 11 applications were made in the disease control program at 7 – 10 day intervals, starting on 20 May 2005 and ending on 1 August 2005. The percentages of leaves and clusters infected with downy mildew were evaluated 11 days after the last application.



'OIL SPOTS' ON GRAPE LEAF UPPER EPIDERMIS

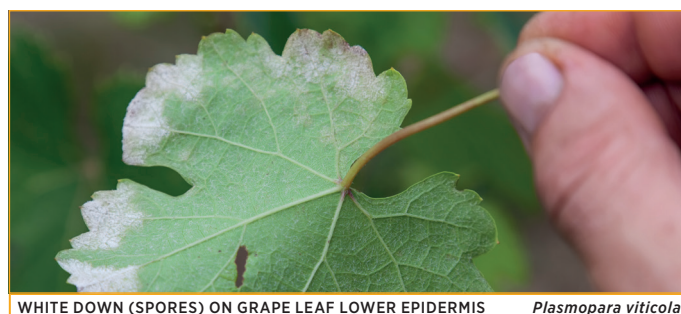
Plasmopara viticola

CONCLUSIONS

- **PREV-AM** 0,4 % had a similar level of performance against downy mildew as copper based fungicide formulations.
- **PREV-AM** applied every week as preventive fungicide provided a good efficacy against downy mildew.

TREATMENT TABLE

TREATMENTS	RATE
1 Untreated control	-
2 King NEW (copper)	200 ml/100 l
3 King (tribasic copper sulphate)	200 ml/100 l
4 PREV-AM at 0,4 %	400 ml/100 l



WHITE DOWN (SPORES) ON GRAPE LEAF LOWER EPIDERMIS

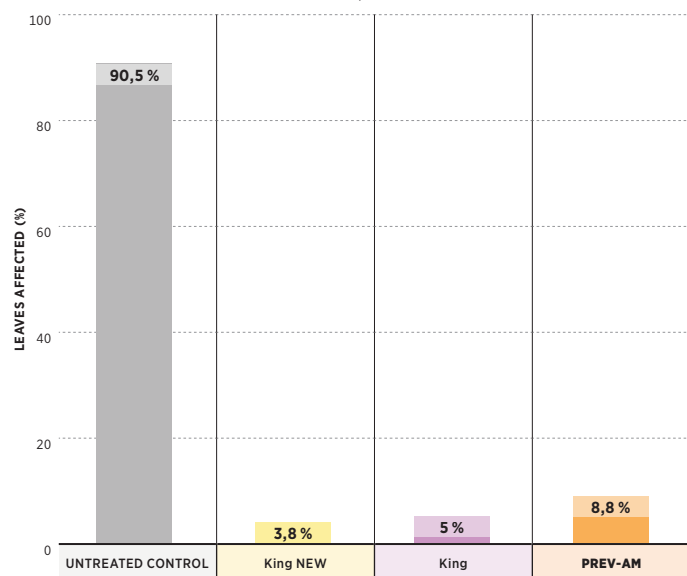
Plasmopara viticola

FIGURE 1

Downy mildew on Moscato grape leaves

after 11 spray treatments at 7 - 10 day intervals

EVALUATION 11 DAYS AFTER LAST APPLICATION, ITALY



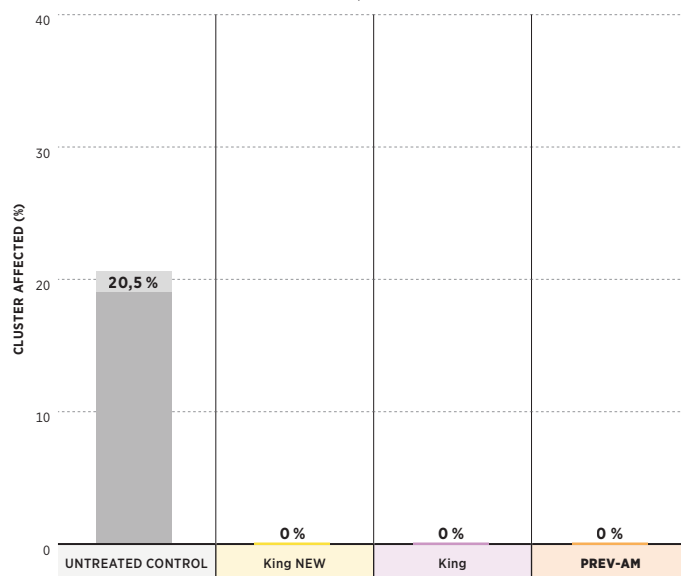
VITVIPLASVIO097ENG

FIGURE 2

Downy mildew on Moscato grape clusters

after 11 spray treatments at 7 - 10 day intervals

EVALUATION 11 DAYS AFTER LAST APPLICATION, ITALY



All brand names and trademarks are the property of their respective owners and are used hereonly for description.