



## BASIC INFORMATION

|                      |                                                              |
|----------------------|--------------------------------------------------------------|
| <b>TARGET</b>        | Predatory mite ( <i>Typhlodromus pyri</i> )                  |
| <b>CROP</b>          | Wine grape, cv. Blauer Portugieser ( <i>Vitis vinifera</i> ) |
| <b>SPRAY VOLUME</b>  | 500 l/ha                                                     |
| <b>LOCATION</b>      | Pavlov, Brno • Czech Republic                                |
| <b>TRIAL DATE</b>    | May - August 2009                                            |
| <b>RESEARCHER(S)</b> | Markéta Broklová, <b>Biocont Laboratory</b>                  |

## FIELD SITUATION

A spray program with **PREV-AM** 0,4 % + Kocide® 2000 (Copper 53,8 %) 1,5 kg/ha and a standard program were applied on a vineyard. The standard program also included Kocide® 2000 at the same rate and the same timings. Other products applied in the standard treatment were VitiSan®, Myco-Sin®VIN, AquaVitrin K and Sulikol K. There were 4 replications with 10 plants per plot. In total 7 spray applications were made from May to August 2009. Evaluation of 30 leaves per plot was performed 5 times during the season. This was compared to an Untreated Control.

## CONCLUSIONS

- Only slight and statistically not significant decreases of the populations were found in the treatments with **PREV-AM** + Kocide® 2000 compared to untreated control. This treatment was therefore classified as **non-toxic**.
- It can be concluded that the treatment with **PREV-AM** is compatible with the use of *Typhlodromus pyri*.

## TREATMENT TABLE

| TREATMENTS | DATE                        | GROWTH STAGE                          |
|------------|-----------------------------|---------------------------------------|
| 1          | May 20 <sup>th</sup> 2009   | (EL 17) Inflorescence fully developed |
| 2          | June 12 <sup>th</sup> 2009  | (EL 25) Late flowering                |
| 3          | June 24 <sup>th</sup> 2009  | (EL 27) Fruit setting                 |
| 4          | July 3 <sup>rd</sup> 2009   | (EL 29) Berries small                 |
| 5          | July 13 <sup>th</sup> 2009  | (EL 31) Berries pea-size              |
| 6          | July 24 <sup>th</sup> 2009  | (EL 33) Berries touch                 |
| 7          | August 4 <sup>th</sup> 2009 | (EL 34) Cluster closing               |

FIGURE 1

### Reduction in predatory mite numbers

in comparison with untreated control (all evaluations)

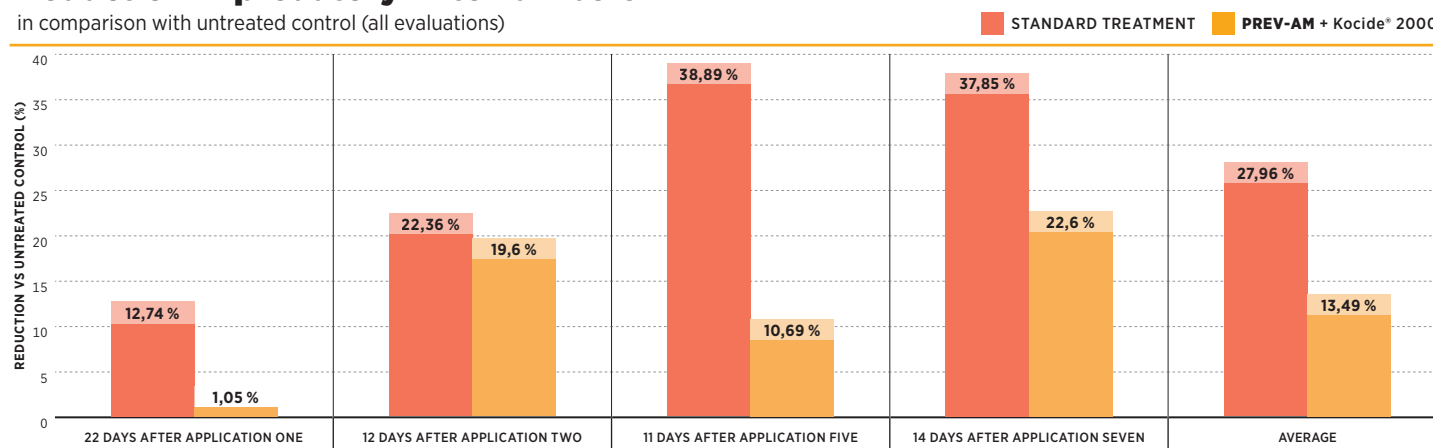
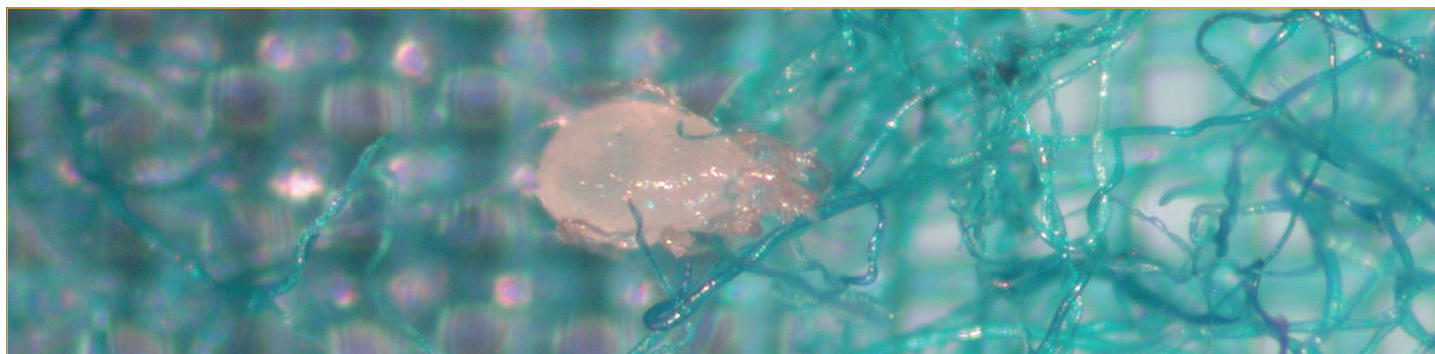


FIGURE 2

According to IOBC scale all **PREV-AM** treatments were considered 1 (not harmful) whereas the standard treatment was considered 2 (slightly harmful).



TARGET: PREDATORY MITE.

*Typhlodromus pyri*